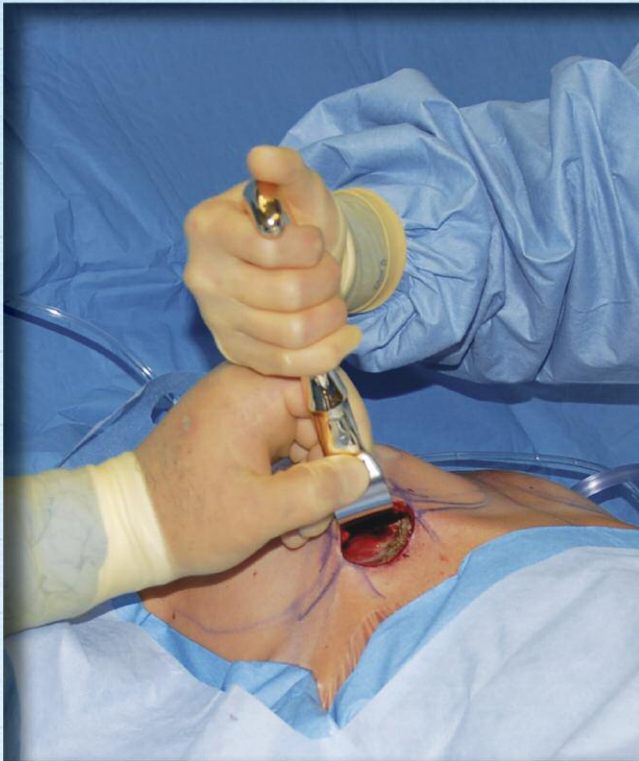


# ASSI® Epstein Breast Retractors



**Epstein Breast Retractors:** developed to create a retractor that provides unparalleled exposure and simultaneously reduces the strain on the surgeon's shoulder while permitting an atraumatic dissection, resulting in less pain and bleeding.

By reversing the handle we have achieved a "power assist" by the assistant. The minimum blade length outside the wound reduces the leverage on the surgeon's shoulder.

The teeth surrounding the working end of the retractor ensures a gentle, yet firm hold on the tissue. The spatulated-end enables the surgeon to obtain maximal exposure at the point of surgical dissection.

**ASSI®-ABR29426**  
Epstein Breast Retractor  
**90x27mm blade**, w/36mm spatulated working end with teeth

**ASSI®-ABR29626**  
Epstein Breast Retractor  
**110x27mm blade**, w/36mm spatulated working end with teeth

**ASSI®-ABR29726**  
Epstein Breast Retractor  
**140x27mm blade**, w/36mm spatulated working end with teeth

**ASSI®-ABR29826**  
Epstein Breast Retractor  
**160x27mm blade**, w/36mm spatulated working end with teeth

**ASSI®-ABR29926**  
Epstein Breast Retractor Set,  
consisting of one each:  
ASSI®-ABR29426, ASSI®-ABR29626,  
ASSI®-ABR29726, ASSI®-ABR29826

Also available with fiber optic, suction and fiber optic/suction, please inquire



Designed By: Mark D. Epstein, M.D., F.A.C.S., Stony Brook, NY



ACCURATE SURGICAL & SCIENTIFIC INSTRUMENTS®  
*For diamond perfect performance™*

**accurate surgical & scientific instruments corporation**

300 Shames Drive, Westbury, NY 11590

800.645.3569 516.333.2570 fax: 516.997.4948 west coast: 800.255.9378 [www accuratesurgical.com](http://www accuratesurgical.com)